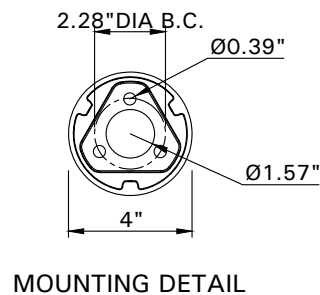
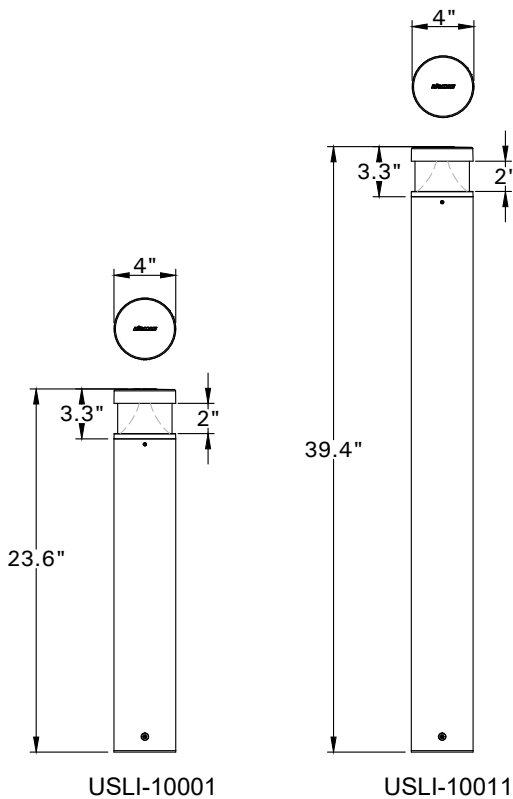


INSTALLATION AND SERVICE MANUAL

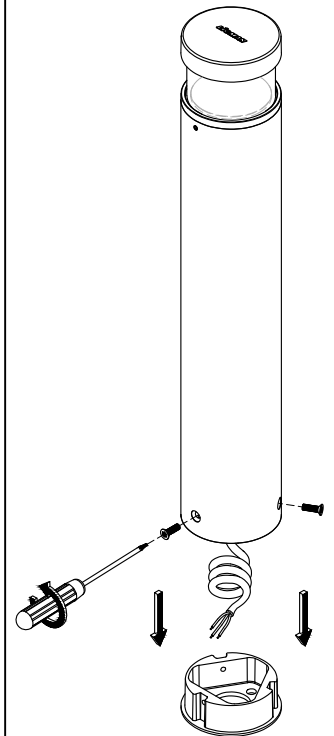
For Installation of Slimsoft 1 Bollard LED.
Model. USLI-10001, USLI-10011

PRODUCT DRAWING (DIMENSIONS)

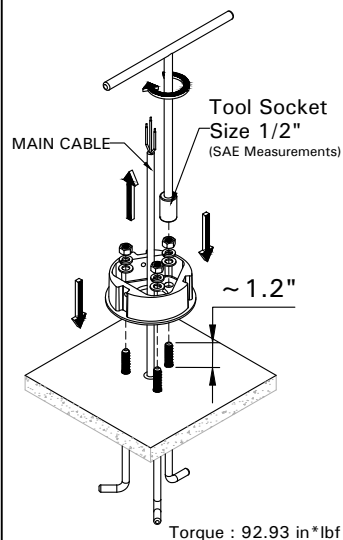
SUITABLE FOR WET LOCATIONS



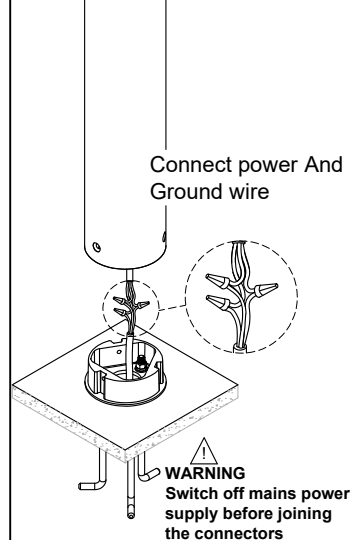
1



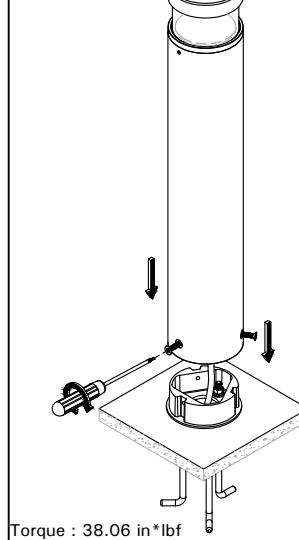
2



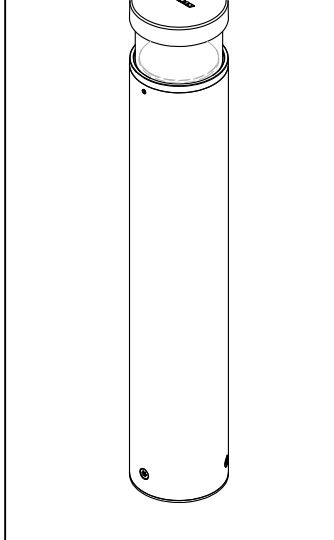
3



4



5



Notice to installer :

1.WIRING INSTRUCTIONS Warning : RISK OF FIRE AND ELECTRICAL SHOCK. : FIXTURE MUST BE INSTALLED BY A QUALIFIED ELECTRICIAN ONLY>FIXTURE IS INTENDED FOR INSTALLATION IN ACCORDANCE WITH THE NATIONAL ELECTRICAL CODE, LOCAL AND FEDERAL CODE SPECIFICATIONS. DISCONNECT POWER BEFORE SERVICING.

Ligman Lighting USA

7144 NE Progress Ct.
Hillsboro, OR 97124 USA
Tel No : +1 503 645 0500